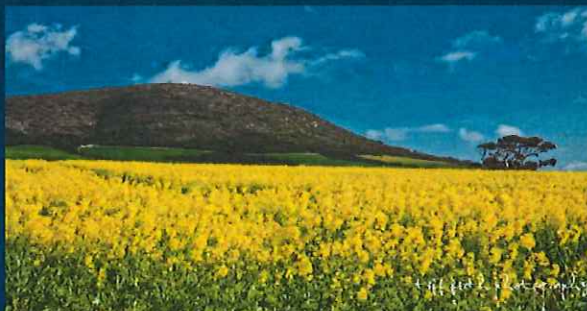


DISTRICT COUNCIL OF LOWER EYRE PENINSULA

Camping



“Working with our Rural & Coastal Communities”



PRM-POL-02 - CAMPING

Version No:	1.1
Issued:	May 2015
Next Review:	May 2019

Responsibility:	Development & Environmental Services
Minutes reference:	C145 (3)
Applicable Legislation:	N/A
Related Policies/Procedures/Codes:	Nil.
Review Frequency:	Following Council Election

For the purpose of this policy Camp includes setting up a camp, or causing a tent, caravan or motor home to remain on the land for greater than 24 hours whether or not any person is in attendance or sleeps on the land.

Any person camping within the District Council of Lower Eyre Peninsula including designated Camp Grounds must comply with the following conditions:

- 1 Keep the area on which he or she is camped in a clean, tidy and sanitary condition;
- 2 Dispose appropriately of any foodstuffs or rubbish either in receptacles provided by Council or by independent means;
- 3 Behave in a manner so as not to cause nuisance or annoyance to other persons;
- 4 Adhere to all directions of any person authorised by Council;
- 5 Ensure that ablutionary facilities are used only for their intended purpose - ie, to ensure facilities are maintained in a clean and tidy manner;
- 6 Allow an authorised officer of Council to inspect said camp site or any tent, caravan or vehicle thereon or thereby.
- 7 All campers must adhere to any restrictions on camp fires during the Fire Danger Season.
- 8 Generators may be used between the hours of 9.00am to 10.00pm only.
- 9 Maximum length of stay at sites within the Council area are as follows:
 - Farm Beach Caravan Park – 4 weeks
 - Louth Bay Camp Ground – 2 weeks
 - Any other areas in the district – 2 weeks

Any person failing to comply with these requirements may be removed from the camping reserve or area.



PRM-POL-02 - CAMPING

Version No:	1.1
Issued:	May 2015
Next Review:	May 2019

Camping is prohibited in the following areas within the District Council of Lower Eyre Peninsula:-

- Louth Bay – (Sec 23 Hd Louth), East of Jetty overlooking Point Warna
- Louth Bay – (Sec 22 Hd Louth – Lot 604, Lot 606, Lot 607) Reserve on western side of Newell Drive
- Louth Bay – Block 2 Hd Louth North end of town overlooking jetty
- Louth Bay – Lot 4 in DP 30320, Hd of Louth, (CT5752/777) except for the designated Louth Bay Campground
- Coffin Bay – on all land under Council care and control within the Township boundary
- Coffin Bay – Lookout and Cemetery Car park
- Farm Beach to Little Douglas – (Allotment 14), Off Hull Road, Hd of Lake Wangary
- North Shields - on all land under Council care and control within the Township boundary
- All road reserve and coastal reserve between the North Shields Township northern boundary and the City of Port Lincoln boundary

SIGNED:

.....
CEO

Date: 15 / 05 / 2015

.....
Mayor, DCLEP

Date: 15 / 05 / 2015